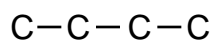


## Naming Alkanes : W.S. - 40

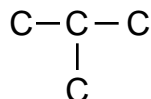
In the diagrams below, assume that all of the carbon atoms are attached to hydrogen atoms. The hydrogen atoms are not shown for clarity.

1) Name the following compounds.

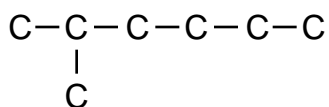
a)



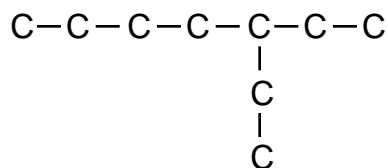
b)



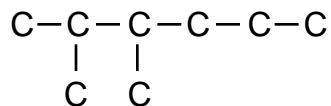
c)



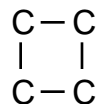
d)



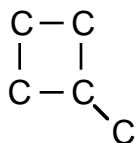
e)



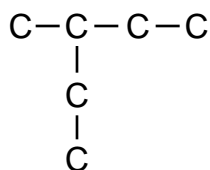
f)



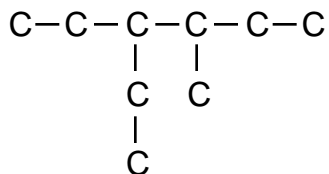
g)



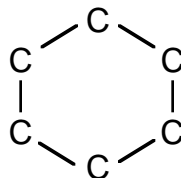
h)



i)

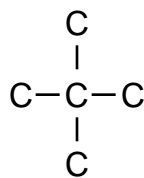
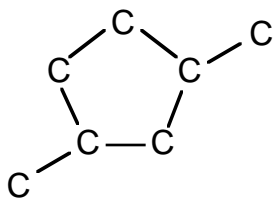


j)



k)

l)



Answers:

1)a) butane, b) methylpropane (not 2-methylpropane), c) 2-methylhexane, d) 3-ethylheptane, e) 2,3-dimethylhexane, f) cyclobutane, g) methylcyclobutane, h) 3-methylpentane, i) 3-ethyl-4-methylhexane, j) cyclohexane, k) 1,3-dimethylcyclopentane, l) dimethylpropane.